



DAHLMAN[®]

PREMIUM SEED | PERFORMANCE PROVEN



2025 PRODUCT GUIDE

CORN | SOYBEANS | ALFALFA





Buying the right seed is the most *IMPORTANT DECISIONS* you make every year. That is why **Dahlman Seed**, an **INDEPENDENT, FAMILY owned** and operated Seed Company since 1922, is dedicated to being the **LEADER** you can trust when making planting decisions. Our Dahlman Seed mission is to provide **PREMIUM SEED/ PERFORMANCE PROVEN** products with the best technology choices for growers in the upper Midwest. Thank you for considering Dahlman Seed as your 2025 partner.

We are again adding phenomenal new products for 2025 to an already superior line-up! One of the highest performing & most consistent in the industry! We are offering **42 corn hybrids with EIGHT of these being new.** Our superior soybean line-up is anchored by **13 high performing XtendFlex®/Roundup Ready 2 Xtend® soybean varieties, with FIVE NEW XtendFlex® varieties!** Our products have **PROVEN** to perform consistently at high levels year after year.

The Dahlman Seed Team excels at being the **LEADERS** every day in every way so we can deliver “Success” and “High Return on Investment”. **Dahlman Seed is your Trusted Partner**, and our local experts can help you find the **PROVEN** products for your farm that will help you reach your goals!

We take this responsibility of **PREMIUM SEED/ PERFORMANCE PROVEN** very seriously because we know buying the right seed for your farm is one of the most important decisions you make every year.

Don’t believe us? GIVE US A CALL!

Dahlman Seed is your Trusted Partner.

Sincerely,
The Dahlman Seed Team

Table of Contents

| | | | |
|--|-------|---|-------|
| Welcome/Introduction..... | 2-3 | Dahlman Roundup Ready® Alfalfa and 2025 Characteristics | 22 |
| Dahlman Corn Brands and 2025 Characteristics | 4-15 | Dahlman Conventional Alfalfa and 2025 Characteristics | 23-24 |
| PowerCore® Enlist® Corn | 16-17 | Think Before You Bin Run | 25 |
| Dahlman Soybean Brands 2025 Characteristics..... | | Dahlman Corn Brands 2025 Reference Chart | 26 |
| XtendFlex® and Roundup Ready 2 Xtend® | 18-21 | Trademarks and Registrations..... | 27 |



Premium Seed

HIGH QUALITY SEED. Seed quality starts with the harvest. Considering seed moisture content, weather, combine harvesting capability, trucking, and dryer capacity. Then once the seed comes out of the dryer the next series of events begin; shelling, cleaning, grading, treating, blending, packaging, and lab testing. Each step being monitored with strict quality control protocols passed on from one Dahlman generation to the next. ***Perhaps the most important element in the entire process is our people.*** It's people who execute the plan and shoulder the responsibility for success. You can trust the experience and integrity that goes into every bag of **Dahlman Seed.**



Performance Proven

CONSISTENT. **Dahlman seed** has focused on bringing forward the best technology and genetics for the upper Midwest growers for decades. We identify consistent performing genetics for our market area, by personally observing plots multiple years, over a wide range of environments. Field observation notes taken during each season are evaluated in conjunction with yield data to make the final decision whether to commercialize or not as a Dahlman Seed product.



Expert Knowledge

TRUSTED PARTNER. Dedicated to building relationships because delivering a "High Return on Investment" starts with educated recommendations. Our Sales Managers and local Dealers have years of experience and their on-going product training provides the foundation for every corn hybrid and soybean variety recommendation. We get to know your fields and farming practices so we can provide the correct recommendation of the right technology and genetics for your fields so you can reach your goals.

CORN PRODUCTS

| Dahlman Brand | Relative Maturity | GDUs to Mid-Silk | GDUs to Black Layer | Population Tolerance | Emergence | Early Vigor | Root Strength | Stalk Strength | Drought Tolerance |
|---------------------|-------------------|------------------|---------------------|----------------------|------------|-------------|---------------|----------------|-------------------|
| R41-22VT2PRIB | 82 | 1110 | 2040 | 30-36 | 8.5 | 9.0 | 8.0 | 8.0 | 8.0 |
| R41-23VT2PRIB | 82 | 1100 | 2030 | 30-34 | 8.5 | 8.5 | 8.0 | 8.0 | 8.0 |
| NEW! R41-154 | 82 | 1090 | 2040 | 30-36 | 8.0 | 8.0 | 8.0 | 8.5 | 8.5 |
| R42-28VT2PRIB | 85 | 1145 | 2100 | 30-36 | 8.0 | 8.5 | 8.0 | 8.0 | 8.5 |
| D43-042 | 85 | 1150 | 2110 | 32-36 | 8.5 | 8.5 | 8.0 | 8.0 | 8.5 |
| R43-29VT2PRIB | 85 | 1155 | 2125 | 30-34 | 8.0 | 8.5 | 7.5 | 8.0 | 7.0 |
| R43-19 | 85 | 1155 | 2125 | 30-34 | 8.0 | 8.5 | 7.5 | 8.0 | 7.0 |
| D43-01 | 85 | 1155 | 2125 | 30-34 | 8.0 | 8.5 | 7.5 | 8.0 | 7.0 |

KEY: 1 = Poor 2-3 = Fair 4-5 = Good 6-7 = Very Good 8-9 = Excellent

R41-22VT2PRIB 82 RM

Medium-Tall Plant Height | 2040 GDU to Black Layer

Strengths

- › Adapts to varying soils and environments
- › Excellent early season vigor for the northern cornbelt
- › Very good test weight
- › Solid overall disease tolerance
- › **RIB COMPLETE® - 5% refuge in the bag**



R41-23VT2PRIB 82 RM

Medium-Tall Plant Height | 2030 GDU to Black Layer

Strengths

- › Best kept in 80-85 day RM zone
- › Position on average to better soils
- › Strong drought and heat stress tolerance
- › Open husks allowing for rapid drydown
- › **RIB COMPLETE® - 5% refuge in the bag**



R41-154 82 RM **NEW!**

Medium Plant Height | 2040 GDU to Black Layer

Strengths

- › Strong emergence and early season vigor
- › Good choice for variable soils
- › Adapts to high or low planting populations
- › Overall solid agronomics disease tolerance
- › Medium plant with excellent roots and stalks



R42-28V2PRIB 85 RM

Medium Plant Height | 2100 GDU to Black Layer

Strengths

- › Adapts to varying soils and environments
- › Great Goss's Wilt rating
- › Very good drought stress tolerance
- › Strong overall agronomics plus excellent standability
- › **RIB COMPLETE® - 5% refuge in the bag**



| Plant Height | Ear Type | Plant Health | Goss's Wilt | Fall Appearance | Drydown | Ear Retention | Test Weight | Corn Belt Refuge Requirement | Dahlman Brand |
|--------------|-----------|--------------|-------------|-----------------|------------|---------------|-------------|------------------------------|------------------------------------|
| MT | SF | 8.0 | 7.0 | 7.5 | 8.0 | 8.5 | 8.5 | RIB | R41-22VT2PRIB |
| MT | SD | 8.0 | 5.0 | 7.5 | 8.5 | 8.5 | 8.0 | RIB | R41-23VT2PRIB |
| M | SF | 8.5 | 7.5 | 8.0 | 8.0 | 8.5 | 8.0 | | R41-154 <small>NEW!</small> |
| M | SF | 8.5 | 7.0 | 7.0 | 7.0 | 8.0 | 7.5 | RIB | R42-28VT2PRIB |
| M | SF | 8.5 | 7.5 | 8.0 | 8.0 | 8.5 | 8.0 | | D43-042 |
| MT | SD | 8.5 | 5.5 | 7.5 | 8.5 | 8.0 | 7.0 | RIB | R43-29VT2PRIB |
| MT | SD | 8.5 | 5.5 | 7.5 | 8.5 | 8.0 | 7.0 | | R43-19 |
| MT | SD | 8.5 | 5.5 | 7.5 | 8.5 | 8.0 | 7.0 | | D43-01 |

KEY: 1 = Poor 2-3 = Fair 4-5 = Good 6-7 = Very Good 8-9 = Excellent

D43-042 85 RM

Medium Plant Height | 2110 GDU to Black Layer

Strengths

- › Excellent emergence and early season vigor
- › Overall solid agronomic package
- › Adapts to varying soils and environments
- › A shorter statured hybrid
- › Very good Goss's Wilt tolerance

CONVENTIONAL

R43-29VT2PRIB 85 RM

Medium-Tall Plant Height | 2125 GDU to Black Layer

Strengths

- › Excellent emergence and early season vigor
- › Good choice for reduced tillage
- › Adapts to varying soils and environments
- › Very girthy ear type
- › **RIB COMPLETE® - 5% refuge in the bag**



R43-19 85 RM

Medium-Tall Plant Height | 2125 GDU to Black Layer

Strengths

- › Excellent emergence and early season vigor
- › Good choice for reduced tillage
- › Adapts to varying soils and environments
- › Very girthy ear type
- › Medium tall plant with strong stalks



D43-01 85 RM

Medium-Tall Plant Height | 2125 GDU to Black Layer

Strengths

- › Excellent emergence and early season vigor
- › Good choice for reduced tillage
- › Adapts to varying soils and environments
- › Very girthy ear type
- › Medium tall plant with strong stalks

CONVENTIONAL

| Dahlman Brand | Relative Maturity | GDU's to Mid-Silk | GDU's to Black Layer | Population Tolerance | Emergence | Early Vigor | Root Strength | Stalk Strength | Drought Tolerance |
|----------------------------|-------------------|-------------------|----------------------|----------------------|------------|-------------|---------------|----------------|-------------------|
| R43-24VT2PRIB | 86 | 1160 | 2225 | 30-34 | 8.5 | 9.0 | 7.0 | 8.5 | 8.5 |
| NEW! 5086PCE | 86 | 1165 | 2230 | 32-36 | 8.0 | 8.0 | 7.0 | 8.0 | 6.5 |
| R45-25VT2PRIB | 90 | 1160 | 2240 | 32-36 | 8.0 | 8.5 | 8.5 | 8.0 | 7.5 |
| R45-12 | 90 | 1225 | 2240 | 30-34 | 8.0 | 8.0 | 8.0 | 7.0 | 8.0 |
| NEW! R45-250VT2PRIB | 90 | 1200 | 2250 | 30-34 | 8.0 | 8.0 | 7.5 | 7.5 | 8.5 |
| NEW! 5092PCE | 92 | 1240 | 2325 | 34-36 | 8.5 | 8.5 | 7.0 | 8.5 | 8.0 |
| R46-27VT2PRIB | 92 | 1240 | 2305 | 32-36 | 8.0 | 8.5 | 8.5 | 8.5 | 8.5 |
| R46-14 | 92 | 1240 | 2305 | 32-36 | 8.0 | 8.5 | 8.5 | 8.5 | 8.5 |

KEY: 1 = Poor 2-3 = Fair 4-5 = Good 6-7 = Very Good 8-9 = Excellent

R43-24VT2PRIB 86 RM

Medium-Tall Plant Height | 2225 GDU to Black Layer

Strengths

- › Strong yield performance across environments
- › Outstanding early season vigor
- › Excellent stress tolerance and stalk strength
- › Strong disease tolerance package
- › **RIB COMPLETE[®] - 5% refuge in the bag**



5086PCE

86 RM **NEW!**

Medium Plant Height | 2230 GDU to Black Layer

Strengths

- › Consistent yield leader for RM
- › Excellent late season plant health and intactness
- › Very good root and stalk strength
- › Strong overall disease tolerance
- › **REFUGE ADVANCED[®] - 5% refuge in the bag**



R45-25VT2PRIB 90 RM

Medium Plant Height | 2240 GDU to Black Layer

Strengths

- › Great choice for cold soils, superior emergence and early vigor
- › Excellent disease package
- › Prefers med-high to high plant populations
- › Very strong Goss's Wilt tolerance
- › **RIB COMPLETE[®] - 5% refuge in the bag**



R45-12




90 RM

Medium-Tall Plant Height | 2240 GDU to Black Layer

Strengths

- › Good ear flex and grain drydown
- › Overall solid disease package
- › Excellent on clay soils plus good stress tolerance
- › Very strong Goss's Wilt tolerance



| Plant Height | Ear Type | Plant Health | Goss's Wilt | Fall Appearance | Drydown | Ear Retention | Test Weight | Corn Belt Refuge Requirement | Dahlman Brand |
|--------------|-----------|--------------|-------------|-----------------|------------|---------------|-------------|------------------------------|---|
| MT | SF | 7.0 | 5.0 | 6.5 | 8.0 | 7.5 | 7.0 | RIB | R43-24VT2PRIB |
| M | SF | 7.0 | 6.5 | 7.0 | 8.0 | 8.0 | 8.0 | RA | 5086PCE  |
| M | SF | 8.5 | 8.5 | 6.0 | 8.5 | 7.5 | 7.0 | RIB | R45-25VT2PRIB |
| MT | SF | 8.5 | 8.0 | 7.5 | 8.0 | 9.0 | 7.0 | | R45-12 |
| MT | SF | 8.5 | 8.0 | 7.5 | 7.5 | 8.0 | 7.5 | RIB | R45-250VT2PRIB  |
| M | SD | 7.5 | 8.0 | 8.0 | 7.5 | 8.0 | 8.5 | RA | 5092PCE  |
| MT | SF | 7.5 | 6.0 | 8.0 | 7.0 | 8.5 | 7.0 | RIB | R46-27VT2PRIB |
| MT | SF | 7.5 | 6.0 | 8.0 | 7.0 | 8.5 | 7.0 | | R46-14 |

KEY: 1 = Poor 2-3 = Fair 4-5 = Good 6-7 = Very Good 8-9 = Excellent

R45-250VT2PRIB 90 RM

Medium-Tall Plant Height | 2250 GDU to Black Layer

Strengths

- › Good ear flex
- › Could move north of RM zone
- › Handles low yield environments and has good stress tolerance
- › Solid Goss's Wilt, NCLB and Tar Spot tolerance
- › **RIB COMPLETE® - 5% refuge in the bag**



5092PCE 92 RM

Medium Plant Height | 2325 GDU to Black Layer

Strengths

- › Consistent performance east to west plus can move south
- › Excellent emergence and early season vigor
- › Very good staygreen and great late season intactness
- › Excellent test weight
- › **REFUGE ADVANCED® - 5% refuge in the bag**



R46-27VT2PRIB 92 RM

Medium-Tall Plant Height | 2305 GDU to Black Layer

Strengths

- › Consistent performance across many soils
- › Very strong early season vigor
- › Best in adapted RM zone with good southern movement
- › Good drought tolerance
- › **RIB COMPLETE® - 5% refuge in the bag**



R46-14 92 RM

Medium-Tall Plant Height | 2305 GDU to Black Layer

Strengths

- › Consistent performance across many soils
- › Very strong early season vigor
- › Best in adapted RM zone with good southern movement
- › Good drought tolerance



| Dahlman Brand | Relative Maturity | GDUs to Mid-Silk | GDUs to Black Layer | Population Tolerance | Emergence | Early Vigor | Root Strength | Stalk Strength | Drought Tolerance |
|---------------------------|-------------------|------------------|---------------------|----------------------|------------|-------------|---------------|----------------|-------------------|
| D46-04 | 92 | 1240 | 2305 | 32-36 | 8.0 | 8.5 | 8.5 | 8.5 | 8.5 |
| R47-245DG/VT2PRIB | 94 | 1240 | 2310 | 30-34 | 8.5 | 8.5 | 8.0 | 8.0 | 8.5 |
| R46-313SSRIB | 94 | 1235 | 2315 | 30-34 | 8.5 | 8.5 | 9.0 | 8.0 | 8.5 |
| R47-24VT2PRIB | 94 | 1220 | 2250 | 32-36 | 8.5 | 8.5 | 8.0 | 7.5 | 8.0 |
| NEW R47-258VT2PRIB | 94 | 1240 | 2300 | 30-34 | 8.0 | 8.0 | 8.0 | 8.5 | 8.0 |
| R48-28VT2PRIB | 95 | 1250 | 2340 | 30-34 | 8.0 | 9.0 | 9.0 | 8.5 | 8.5 |
| D48-04 | 95 | 1250 | 2340 | 30-34 | 8.0 | 9.0 | 9.0 | 8.5 | 8.5 |
| R48-239VT2PRIB | 95 | 1245 | 2340 | 32-36 | 8.0 | 8.0 | 9.0 | 8.5 | 8.0 |

KEY: 1 = Poor 2-3 = Fair 4-5 = Good 6-7 = Very Good 8-9 = Excellent

D46-04 92 RM

Medium-Tall Plant Height | 2305 GDU to Black Layer

Strengths

- › Consistent performance across many soils
- › Very strong early season vigor
- › Best in adapted RM zone with good southern movement
- › Good drought tolerance

CONVENTIONAL

R47-245DG/VT2PRIB 94 RM

Medium-Tall Plant Height | 2310 GDU to Black Layer

Strengths

- › Solid agronomics with quick drydown
- › Adapts to most soils and yield environments
- › Excellent test weight and drought tolerance
- › Excels in low yield environments
- › **RIB COMPLETE[®] - 5% refuge in the bag**

DroughtGard[®]
 HYBRIDS
VTDoublePRO[®]
 RIB COMPLETE

R46-313SSRIB 94 RM

Medium-Tall Plant Height | 2315 GDU to Black Layer

Strengths

- › Solid root and stalk strength
- › Good choice for cold soils and minimum tillage
- › Excellent stay green and a season long healthy appearance
- › Very strong Goss's Wilt tolerance
- › **RIB COMPLETE[®] - 5% refuge in the bag**

SmartStax[®]
 RIB COMPLETE

R47-24VT2PRIB 94 RM

Medium-Tall Plant Height | 2250 GDU to Black Layer

Strengths

- › Can position as a full season hybrid
- › Adapts to most soils and yield environments
- › Solid agronomics with quick drydown
- › Good choice for high management practices
- › **RIB COMPLETE[®] - 5% refuge in the bag**

VTDoublePRO[®]
 RIB COMPLETE

| Plant Height | Ear Type | Plant Health | Goss's Wilt | Fall Appearance | Drydown | Ear Retention | Test Weight | Corn Belt Refuge Requirement | Dahlman Brand |
|--------------|-----------|--------------|-------------|-----------------|------------|---------------|-------------|------------------------------|-----------------------------------|
| MT | SF | 7.5 | 6.0 | 8.0 | 7.0 | 8.5 | 7.0 | | D46-04 |
| MT | SF | 7.5 | 6.0 | 8.5 | 8.0 | 8.5 | 8.5 | RIB | R47-245DG/VT2PRIB |
| MT | SF | 8.0 | 8.0 | 8.0 | 8.5 | 8.0 | 7.0 | RIB | R46-313SSRIB |
| MT | SF | 7.5 | 6.0 | 8.0 | 8.0 | 8.5 | 7.0 | RIB | R47-24VT2PRIB |
| MT | SF | 8.5 | 7.5 | 8.5 | 8.0 | 8.5 | 8.0 | RIB | R47-258VT2PRIB NEW! |
| M | SF | 8.0 | 6.5 | 8.5 | 7.5 | 8.5 | 8.5 | RIB | R48-28VT2PRIB |
| M | SF | 8.0 | 6.5 | 8.5 | 7.5 | 8.5 | 8.5 | | D48-04 |
| MT | SF | 7.5 | 6.5 | 7.5 | 8.0 | 8.0 | 7.0 | RIB | R48-239VT2PRIB |

KEY: 1 = Poor 2-3 = Fair 4-5 = Good 6-7 = Very Good 8-9 = Excellent

R47-258VT2PRIB 94 RM **NEW!**

Medium-Tall Plant Height | 2300 GDU to Black Layer

Strengths

- › Strong adaptability to most soils and yield environments
- › Above average Goss's Wilt tolerance
- › Solid agronomics plus good drought tolerance
- › Great late season intactness and staygreen
- › **RIB COMPLETE® - 5% refuge in the bag**



R48-28VT2PRIB 95 RM

Medium Plant Height | 2340 GDU to Black Layer

Strengths

- › Strong drought tolerant and versatile hybrid
- › Adapts to most soils across our market area
- › Good choice for cold soils and minimum tillage
- › Excellent late season intactness and standability
- › **RIB COMPLETE® - 5% refuge in the bag**



D48-04 95 RM

Medium Plant Height | 2340 GDU to Black Layer

Strengths

- › Strong drought tolerant and versatile hybrid
- › Adapts to most soils across our market area
- › Good choice for cold soils and minimum tillage
- › Excellent late season intactness and standability
- › Very good Goss's Wilt tolerance

CONVENTIONAL

R48-239VT2PRIB 95 RM

Medium-Tall Plant Height | 2340 GDU to Black Layer

Strengths

- › Consistent hybrid across yield environments and years
- › Top end performance potential from Dakotas east into Wisconsin
- › Very strong stalk and root strength-enhancing yield potential
- › Excellent late season intactness and open husks allow rapid drydown
- › **RIB COMPLETE® - 5% refuge in the bag**



| Dahlman Brand | Relative Maturity | GDUs to Mid-Silk | GDUs to Black Layer | Population Tolerance | Emergence | Early Vigor | Root Strength | Stalk Strength | Drought Tolerance |
|---------------|-------------------|------------------|---------------------|----------------------|-----------|-------------|---------------|----------------|-------------------|
| R48-21VT2PRIB | 96 | 1250 | 2340 | 30-34 | 8.5 | 9.0 | 8.5 | 8.0 | 7.0 |
| 3096PCE | 96 | 1250 | 2350 | 30-34 | 8.0 | 8.0 | 8.0 | 7.0 | 7.0 |
| R47-10 | 94 | 1250 | 2330 | 32-36 | 7.5 | 7.5 | 9.0 | 7.5 | 8.5 |
| D48-08 | 96 | 1250 | 2330 | 32-36 | 7.5 | 7.5 | 9.0 | 7.5 | 8.5 |
| R49-340SSRIB | 98 | 1240 | 2400 | 32-36 | 8.5 | 8.5 | 8.5 | 8.5 | 8.5 |
| R49-29VT2PRIB | 98 | 1230 | 2425 | 32-36 | 8.5 | 8.5 | 8.0 | 8.0 | 8.5 |
| D49-039 | 98 | 1230 | 2425 | 32-36 | 8.5 | 8.5 | 8.0 | 8.0 | 8.5 |
| R49-23VT2PRIB | 98 | 1210 | 2420 | 32-36 | 8.5 | 8.5 | 8.5 | 8.0 | 8.0 |

KEY: 1 = Poor 2-3 = Fair 4-5 = Good 6-7 = Very Good 8-9 = Excellent

R48-21VT2PRIB 96 RM

Medium Plant Height | 2340 GDU to Black Layer

Strengths

- › Top end yield across a very large area of adaptation
- › Semi flex ear that can be positioned on tough ground
- › Good choice for cold soils and minimum tillage
- › Very good test weight
- › **RIB COMPLETE[®] - 5% refuge in the bag**



3096PCE 96 RM

Medium-Tall Plant Height | 2350 GDU to Black Layer

Strengths

- › Consistent, dominant yields across years and yield environments
- › Very good overall disease package
- › Great late season stalk integrity
- › Excellent root strength
- › **REFUGE ADVANCED[®] - 5% refuge in the bag**



R47-10 94 RM

Medium Plant Height | 2330 GDU to Black Layer

Strengths

- › Excellent grain quality and test weight
- › Outstanding root and stalk strength
- › Good Goss's Wilt tolerance
- › Plant at medium high populations
- › Good choice on stress prone acres



D48-08 96 RM

Medium Plant Height | 2330 GDU to Black Layer

Strengths

- › Excellent grain quality and test weight
- › Outstanding root and stalk strength
- › Good Goss's Wilt tolerance
- › Plant at medium high populations
- › Good choice on stress prone acres

CONVENTIONAL

| Plant Height | Ear Type | Plant Health | Goss's Wilt | Fall Appearance | Drydown | Ear Retention | Test Weight | Corn Belt Refuge Requirement | Dahlman Brand |
|--------------|----------|--------------|-------------|-----------------|---------|---------------|-------------|------------------------------|---------------|
| M | SF | 7.0 | 4.5 | 7.5 | 8.0 | 8.0 | 9.0 | RIB | R48-21VT2PRIB |
| MT | SF | 7.0 | 7.0 | 8.0 | 7.0 | 8.5 | 7.0 | RA | 3096PCE |
| M | SD | 8.0 | 8.0 | 8.5 | 7.0 | 9.0 | 8.5 | | R47-10 |
| M | SD | 8.0 | 8.0 | 8.5 | 7.0 | 9.0 | 8.5 | | D48-08 |
| MT | SF | 8.5 | 7.5 | 8.5 | 8.5 | 8.5 | 8.5 | RIB | R49-340SSRIB |
| M | SF | 8.0 | 8.0 | 9.0 | 7.0 | 8.5 | 7.0 | RIB | R49-29VT2PRIB |
| M | SF | 8.0 | 8.0 | 9.0 | 7.0 | 8.5 | 7.0 | | D49-039 |
| M | SD | 7.0 | 4.5 | 9.0 | 8.5 | 8.0 | 7.0 | RIB | R49-23VT2PRIB |

KEY: 1 = Poor 2-3 = Fair 4-5 = Good 6-7 = Very Good 8-9 = Excellent

R49-340SSRIB 98 RM

Medium-Tall Plant Height | 2400 GDU to Black Layer

Strengths

- › Thrives in all yield environments
- › Plant medium to medium high populations
- › Excellent stay green and fall intactness
- › Solid overall disease package with very good drought tolerance
- › **RIB COMPLETE® - 5% refuge in the bag**



R49-29VT2PRIB 98 RM

Medium Plant Height | 2425 GDU to Black Layer

Strengths

- › Adapts to all yield environments
- › Exceptional fall appearance and staygreen
- › Position west to east
- › Very good Goss's Wilt tolerance
- › **RIB COMPLETE® - 5% refuge in the bag**



D49-039 98 RM

Medium Plant Height | 2425 GDU to Black Layer

Strengths

- › Adapts to all yield environments
- › Exceptional fall appearance and stay green
- › Position west to east
- › Very good Goss's Wilt tolerance

CONVENTIONAL

R49-23VT2PRIB 98 RM

Medium Plant Height | 2420 GDU to Black Layer

Strengths

- › Outstanding yield potential plus quick drydown
- › Consistent ear size that shows nice girth
- › Excellent late season intactness
- › Very early flowering 98 day hybrid
- › **RIB COMPLETE® - 5% refuge in the bag**



| Dahlman Brand | Relative Maturity | GDU's to Mid-Silk | GDU's to Black Layer | Population Tolerance | Emergence | Early Vigor | Root Strength | Stalk Strength | Drought Tolerance |
|---------------------------|-------------------|-------------------|----------------------|----------------------|------------|-------------|---------------|----------------|-------------------|
| NEW R50-252VT2PRIB | 100 | 1250 | 2440 | 30-34 | 8.0 | 8.0 | 7.5 | 8.0 | 7.5 |
| R50-355SSRIB | 100 | 1260 | 2495 | 30-34 | 8.0 | 8.0 | 8.5 | 8.5 | 8.0 |
| NEW 5102PCE | 102 | 1270 | 2420 | 30-34 | 8.5 | 8.5 | 8.0 | 8.5 | 8.0 |
| NEW R52-254TRE | 102 | 1260 | 2465 | 30-34 | 8.0 | 8.0 | 7.0 | 8.5 | 8.0 |
| R52-24VT2PRIB | 103 | 1280 | 2440 | 30-34 | 8.5 | 9.0 | 8.5 | 8.5 | 8.5 |
| R52-14 | 103 | 1280 | 2440 | 30-34 | 8.5 | 9.0 | 8.5 | 8.5 | 8.5 |
| D52-04 | 103 | 1280 | 2440 | 30-34 | 8.5 | 9.0 | 8.5 | 8.5 | 8.5 |
| R52-26VT2PRIB | 104 | 1290 | 2540 | 30-34 | 8.5 | 9.0 | 8.5 | 8.5 | 8.0 |

KEY: 1 = Poor 2-3 = Fair 4-5 = Good 6-7 = Very Good 8-9 = Excellent

R50-252VT2PRIB 100 RM **NEW!**

Medium Plant Height | 2440 GDU to Black Layer

Strengths

- › Widely adapted across environments and soil types
- › Overall solid agronomic package and very good greensnap tolerance
- › Responds to medium plant populations and can move north of RM
- › Good Goss's Wilt tolerance
- › **RIB COMPLETE[®] - 5% refuge in the bag**



R50-355SSRIB 100 RM

Medium-Tall Plant Height | 2495 GDU to Black Layer

Strengths

- › Strong yield potential with very good ear flex
- › Position on average to better soils
- › Plant medium populations
- › Very good stalk and root strength
- › **RIB COMPLETE[®] - 5% refuge in the bag**



5102PCE 102 RM **NEW!**

Medium-Tall Plant Height | 2420 GDU to Black Layer

Strengths

- › Adapts east to west across yield environments
- › Excellent emergence and early season vigor
- › Great late season intactness and appearance
- › Good Goss's Wilt and an overall solid disease package
- › **REFUGE ADVANCED[®] - 5% refuge in the bag**



R52-254TRE 102 RM **NEW!**

Medium Plant Height | 2465 GDU to Black Layer

Strengths

- › Excellent late season intactness
- › Rapid drydown with good test weight
- › Very good early season vigor and drought tolerance
- › Performs in all yield environments
- › **RIB COMPLETE[®] - 5% refuge in the bag**



| Plant Height | Ear Type | Plant Health | Goss's Wilt | Fall Appearance | Drydown | Ear Retention | Test Weight | Corn Belt Refuge Requirement | Dahlman Brand |
|--------------|-----------|--------------|-------------|-----------------|------------|---------------|-------------|------------------------------|---|
| M | SF | 7.5 | 7.0 | 7.5 | 8.0 | 8.0 | 7.0 | RIB | R50-252VT2PRIB <small>NEW!</small> |
| MT | SF | 7.5 | 7.5 | 7.0 | 7.5 | 8.0 | 7.0 | RIB | R50-355SSRIB |
| MT | SF | 7.0 | 8.0 | 8.0 | 7.5 | 8.5 | 7.0 | RA | 5102PCE <small>NEW!</small> |
| M | SF | 7.0 | 7.0 | 8.5 | 8.0 | 8.5 | 8.0 | RIB | R52-254TRE <small>NEW!</small> |
| MT | SF | 8.0 | 8.0 | 8.0 | 7.5 | 8.5 | 7.0 | RIB | R52-24VT2PRIB |
| MT | SF | 8.0 | 8.0 | 8.0 | 7.5 | 8.5 | 7.0 | | R52-14 |
| MT | SF | 8.0 | 8.0 | 8.0 | 7.5 | 8.5 | 7.0 | | D52-04 |
| M | SF | 8.5 | 8.5 | 8.5 | 8.5 | 8.5 | 7.0 | RIB | R52-26VT2PRIB |

KEY: 1 = Poor 2-3 = Fair 4-5 = Good 6-7 = Very Good 8-9 = Excellent

R52-24VT2PRIB 103 RM

Medium-Tall Plant Height | 2440 GDU to Black Layer

Strengths

- › Widely adapted across environments and soil types
- › Overall solid agronomic package
- › Excellent early season vigor good for cold soils
- › Good Goss's Wilt tolerance
- › **RIB COMPLETE® - 5% refuge in the bag**



R52-14 103 RM

Medium-Tall Plant Height | 2440 GDU to Black Layer

Strengths

- › Widely adapted across environments and soil types
- › Overall solid agronomic package
- › Excellent early season vigor good for cold soils
- › Good Goss's Wilt tolerance



D52-04 103 RM

Medium-Tall Plant Height | 2440 GDU to Black Layer

Strengths

- › Widely adapted across environments and soil types
- › Overall solid agronomic package
- › Excellent early season vigor good for cold soils
- › Good Goss's Wilt tolerance

CONVENTIONAL

R52-26VT2PRIB 104 RM

Medium Plant Height | 2540 GDU to Black Layer

Strengths

- › Thrives in all yield environments and soil types
- › Plant medium populations
- › Excellent early season vigor and grain drydown
- › Excellent Goss's Wilt tolerance
- › **RIB COMPLETE® - 5% refuge in the bag**



| Dahlman Brand | Relative Maturity | GDU's to Mid-Silk | GDU's to Black Layer | Population Tolerance | Emergence | Early Vigor | Root Strength | Stalk Strength | Drought Tolerance |
|---------------|-------------------|-------------------|----------------------|----------------------|-----------|-------------|---------------|----------------|-------------------|
| R53-359SSRIB | 106 | 1280 | 2500 | 32-36 | 7.5 | 8.0 | 8.5 | 8.5 | 8.5 |
| R53-350SSRIB | 106 | 1280 | 2580 | 32-36 | 8.0 | 8.0 | 8.5 | 8.5 | 8.5 |

KEY: 1 = Poor 2-3 = Fair 4-5 = Good 6-7 = Very Good 8-9 = Excellent

R53-359SSRIB 106 RM

Medium Plant Height | 2500 GDU to Black Layer

Strengths

- › Adapts to all yield environments
- › Excellent Goss's Wilt tolerance
- › Very good drought tolerance and late season intactness
- › Outstanding early season vigor and test weight
- › **RIB COMPLETE[®] - 5% refuge in the bag**



R53-350SSRIB 106 RM

Medium-Tall Plant Height | 2580 GDU to Black Layer

Strengths

- › Consistent performance year after year
- › Strong overall disease package and very good Goss's Wilt tolerance
- › Very good drought tolerance and grain drydown
- › Outstanding stalk and root strength
- › **RIB COMPLETE[®] - 5% refuge in the bag**



ENLIST[®] WEED CONTROL SYSTEM— PROVEN CONTROL OF TOUGH WEEDS



Enlist Duo[®] and Enlist One[®] herbicides with Colex-D[®] technology are the only herbicides containing 2,4-D that are authorized for preemergence and postemergence use on PowerCore[®] Enlist[®] corn crops.

2,4-D choline

Glyphosate

Glufosinate

FOP Herbicides



- Convenient proprietary blend of 2,4-D choline and glyphosate
- The two sites of action work together to deliver control of yield-robbing weeds and help prevent resistance



- Straight-goods 2,4-D choline with additional tank-mix flexibility
- Provides additional tank-mix flexibility with Liberty[®] herbicide and other qualified tank-mix products, allowing for a customized weed control program to fit each farm

On-Target Application

- 90% less drift than traditional 2,4-D
- 96% less volatile than 2,4-D ester

| Plant Height | Ear Type | Plant Health | Goss's Wilt | Fall Appearance | Drydown | Ear Retention | Test Weight | Corn Belt Refuge Requirement | Dahlman Brand |
|--------------|----------|--------------|-------------|-----------------|---------|---------------|-------------|------------------------------|---------------|
| M | SF | 8.5 | 8.5 | 8.5 | 8.0 | 8.5 | 8.5 | RIB | R53-359SSRIB |
| MT | SF | 8.0 | 8.0 | 8.0 | 8.5 | 8.5 | 7.0 | RIB | R53-350SSRIB |

KEY: 1 = Poor 2-3 = Fair 4-5 = Good 6-7 = Very Good 8-9 = Excellent

SmartStax[®]
TECHNOLOGY

**STAY TRUE TO
YOUR
ROOTS**

**This is where corn rootworm
inflicts the worst damage.**

Learn how to do the ideal root dig at traits.bayer.com/DigDeeper

SMARTSTAX[®] TECHNOLOGY: PROVEN ON
OVER 100 MILLION ACRES.

Performance may vary from location to location and from year to year, as local growing, soil and weather conditions may vary. Growers should evaluate data from multiple locations and years whenever possible and should consider the impacts of these conditions on the grower's fields. Details of these practices can be found in the Trait Stewardship Responsibilities Notice to Farmers printed in this publication.
©2020 Bayer Group, All Rights Reserved 14209

POWERCORE[®] ENLIST[®] CORN



FLEXIBILITY HAS NEVER LOOKED SO STRONG





Product overview

- An advanced combination of high-yielding genetics, unsurpassed flexibility and protection against above-ground pests
- Stacked with the Enlist[®] corn trait for multiple modes of action against tough weeds

Farmer benefits

- Long-lasting insect control against key above-ground susceptible insects.
- Herbicide flexibility with tolerance to 2,4-D choline in Enlist[®] herbicides, glyphosate, glufosinate and FOP herbicides
- Enlist[®] weed control system provides a whole-farm, neighbor-friendly solution across corn, soybean and cotton acres

How does PowerCore[®] trait technology stack up?

| | Primary Pest Controlled | PowerCore [®] Enlist [®] corn | VT Double PRO [®] corn |
|---|---|---|---------------------------------|
| |  Black cutworm | ✓ | NONE |
| 3 modes of action |  European corn borer | ✓✓✓ | ✓✓ |
| |  Fall armyworm | ✓✓✓ | ✓✓ |
| |  Southwestern corn borer | ✓✓✓ | ✓✓ |
| Checkmarks represent number of modes of action for control over specified pest. | | | |

* PowerCore Enlist corn requires a 5% refuge in the Corn Belt and a 20% refuge in cotton-growing areas.

Enlist®

WEED CONTROL SYSTEM



Economical weed control

– enhancing corn trait technology

Enlist® corn provides robust tolerance to 2,4-D choline in Enlist® herbicides, as well as glyphosate and FOP herbicides, providing more weed control options to give farmers more flexibility and choice in their field management.



Hybrids tolerant to:

2,4-D
choline

Glyphosate

Glufosinate

FOP
herbicides

Insect protection from PowerCore® or Vorceed™ trait technology

Additional benefits to the Enlist™ System

- Wider application window: no larger than V8 growth stage or 30"
- Low volatility
- Whole farm convenience

LIBERTY LINK

Product responses can vary by location, pest population, environmental conditions, and agricultural practices. Please contact your Corteva Agriscience sales professional for information and suggestions specific to your operation. Individual results may vary. Various factors, including pest pressure, reduced susceptibility, and insect resistance in some pest populations may affect efficacy of certain corn technology products in some regions. To help extend durability of these technologies, Corteva Agriscience recommends you implement Integrated Pest Management (IPM) practices such as crop rotation, cultural and biological control tactics (including rotating sources of Bt-protected corn traits), pest scouting, and appropriate use of pest thresholds when employing management practices such as insecticide application. You must also plant the required refuge when using these technologies. Please contact your sales professional or consult with your local university extension for more information regarding insect resistance management guidelines, best management practices and to understand whether there has been a shift in susceptibility or insect resistance with certain pests documented in your area.

™ & ® Trademarks of Corteva Agriscience and its affiliated companies. Enlist Duo® and Enlist One® herbicides are not registered for sale or use in all states or counties. Contact your state pesticide regulatory agency to determine

if a product is registered for sale or use in your area. Enlist Duo and Enlist One are the only 2,4-D products authorized for use with Enlist crops. Consult Enlist herbicide labels for weed species controlled. Always read and follow label directions.

PowerCore® multi-event technology developed by Corteva Agriscience and Monsanto. PowerCore® is a registered trademark of Monsanto Technology LLC. Always follow IRM, grain marketing and all other stewardship practices and pesticide label directions. B.t. products may not yet be registered in all states. Check with your seed representative for the registration status in your state.

The PowerCore® Enlist® Refuged Advanced® trait is not yet available for sale or distribution in the U.S.; limited quantities available in Canada for 2023.

Liberty®, LibertyLink® and the Water Droplet Design are trademarks of BASF.

™ & ® Trademarks of Corteva Agriscience and its affiliated companies. © 2023 Corteva. 011352-2 COR (05/23)



CORN

SOYBEAN PRODUCTS

| Dahlman Brand | Maturity | Plant Height | Plant Type | Iron Chlorosis | Emergence | Min-Till Adaptability | Stress Tolerance | Stability |
|--------------------|------------|--------------|------------|----------------|------------|-----------------------|------------------|------------|
| 74009XF | 0.09 | MT | M | 6.5 | 8.5 | 8.5 | 8.0 | 7.0 |
| 7401XF | 0.1 | MT | M/B | 7.0 | 8.0 | 8.0 | 8.0 | 7.5 |
| 7301XF | 0.1 | T | M/B | 8.0 | 8.5 | 8.5 | 8.0 | 7.0 |
| 7203XF | 0.3 | T | M/B | 8.0 | 8.5 | 8.5 | 8.0 | 7.5 |
| 7304XF | 0.4 | M | M/B | 7.5 | 8.5 | 8.5 | 8.5 | 8.0 |
| NEW! 7504XF | 0.4 | MT | M/B | 7.0 | 8.5 | 8.5 | 8.0 | 7.0 |
| NEW! 7508XF | 0.8 | MT | M/B | 6.0 | 8.0 | 8.0 | 8.5 | 8.0 |
| 7210XF | 1.0 | MT | M/B | 7.0 | 8.5 | 8.0 | 8.0 | 7.0 |

KEY: 1 = Poor 2-3 = Fair 4-5 = Good 6-7 = Very Good 8-9 = Excellent

74009XF

0.09

Medium-Tall Plant Height | Medium Plant Type

Strengths

- › Excellent emergence
- › Solid Phytophthora Root Rot tolerance
- › Moderate resistance to Brown Stem Rot
- › Rps 1c gene for multi-race Phytophthora
- › **SCN Tolerance**



7401XF

0.1

Medium-Tall Plant Height | Medium-Bush Plant Type

Strengths

- › Strong IDC & Phytophthora Root Rot tolerance
- › Solid SWM tolerance & overall agronomics package
- › Moderate resistance to Brown Stem Rot
- › Rps 1c gene for multi-race Phytophthora
- › **SCN Tolerance**



7301XF

0.1

Tall Plant Height | Medium-Bush Plant Type

Strengths

- › Adapts well to variable soil types
- › Excellent IDC tolerance
- › Brown Stem Rot resistant
- › Rps 1c gene for multi-race Phytophthora



7203XF

0.3

Tall Plant Height | Medium-Bush Plant Type

Strengths

- › Adapts well to variable soil types
- › Excellent IDC tolerance
- › Brown Stem Rot resistant
- › Rps 1c gene for multi-race Phytophthora



| Soybean Cyst Nematode Race | Phytophthora Gene | Phytophthora Field Tolerance | Brown Stem Rot | White Mold | Sudden Death Syndrome | Charcoal Root Rot | Dahlman Brand |
|-------------------------------|----------------------|---------------------------------|----------------|------------|--------------------------|----------------------|-----------------------------------|
| R3, MR14 | Rps 1c | 7.0 | 8.0 | 5.5 | NA | NA | 74009XF |
| R3, MR14 | Rps 1c | 6.5 | 8.0 | 7.0 | NA | NA | 7401XF |
| S | Rps 1c | 6.5 | 9.0 | 7.0 | 4.5 | NA | 7301XF |
| S | Rps 1c | 6.5 | 9.0 | 7.0 | 4.5 | NA | 7203XF |
| R3, MR14 | Rps 1c | 7.5 | 9.0 | 5.5 | NA | NA | 7304XF |
| R3, MR14 | Rps 3a | 7.5 | 8.5 | 5.0 | 7.5 | NA | 7504XF <small>NEW!</small> |
| R3, MR14 | Rps 1c | 7.5 | 9.0 | 5.0 | 4.5 | NA | 7508XF <small>NEW!</small> |
| R3, MR14 | Rps H3a | 7.0 | 8.5 | 6.5 | NA | 6.5 | 7210XF |

KEY: 1 = Poor 2-3 = Fair 4-5 = Good 6-7 = Very Good 8-9 = Excellent

7304XF

0.4

Medium Plant Height | Medium-Bush Plant Type

Strengths

- › Excellent emergence and standability
- › Solid IDC and Phytophthora Root Rot tolerance
- › Brown Stem Rot resistant
- › Rps 1c gene for multi-race Phytophthora
- › **SCN Tolerance**



7504XF

0.4 NEW!

Medium-Tall Plant Height | Medium-Bush Plant Type

Strengths

- › Excellent emergence and stress tolerance
- › Very good IDC and Phytophthora Root Rot tolerance
- › Strong SDS tolerance
- › Rps 3a gene for multi-race Phytophthora
- › **SCN Tolerance**



7508XF

0.8 NEW!

Medium-Tall Plant Height | Medium-Bush Plant Type

Strengths

- › Excellent standability and stress tolerance
- › Well adapted in the Dakotas
- › Brown Stem Rot resistant
- › Rps 1c gene for multi-race Phytophthora
- › **SCN Tolerance**



7210XF

1.0

Medium Plant Height | Medium-Bush Plant Type

Strengths

- › Excellent emergence and standability
- › Solid IDC and Phytophthora Root Rot tolerance
- › Brown Stem Rot resistant
- › Rps 1c gene for multi-race Phytophthora
- › **SCN Tolerance**



| Dahlman Brand | Maturity | Plant Height | Plant Type | Iron Chlorosis | Emergence | Min-Till Adaptability | Stress Tolerance | Standability |
|--------------------|----------|--------------|------------|----------------|-----------|-----------------------|------------------|--------------|
| NEW! 7512XF | 1.2 | MT | B | 6.0 | 8.0 | 8.0 | 8.5 | 8.0 |
| 7213XF | 1.3 | MT | M/B | 6.5 | 8.0 | 7.5 | 7.0 | 7.0 |
| NEW! 7515XF | 1.5 | MT | M/B | 5.5 | 8.5 | 8.5 | 8.5 | 8.0 |
| 7218XF | 1.8 | MT | M | 6.0 | 8.5 | 8.0 | 7.0 | 8.0 |
| NEW! 7520XF | 2.0 | M | M | 6.0 | 8.0 | 8.0 | 7.5 | 8.5 |

KEY: 1 = Poor 2-3 = Fair 4-5 = Good 6-7 = Very Good 8-9 = Excellent

7512XF

1.2 **NEW!**

Medium-Tall Plant Height | Bush Plant Type

Strengths

- › Excellent standability and stress tolerance
- › Excellent western adaptability that also moves east well
- › Brown Stem Rot resistant
- › Rps 1c3a gene for multi-race Phytophthora
- › **SCN Tolerance**



7213XF

1.3

Medium-Tall Plant Height | Medium-Bush Plant Type

Strengths

- › Strong performance west to east
- › Solid overall disease and agronomic package
- › Moderate resistance to Brown Stem Rot
- › Rps 1c gene for multi-race Phytophthora
- › **SCN Tolerance**



7515XF

1.5 **NEW!**

Medium-Tall Plant Height | Medium-Bush Plant Type

Strengths

- › Excellent emergence and stress tolerance
- › Very strong west to east adaptability
- › Brown Stem Rot resistant
- › Rps 1c3a gene for multi-race Phytophthora
- › **SCN Tolerance**



7218XF

1.8

Medium-Tall Plant Height | Medium Plant Type

Strengths

- › Adapts to all yield environments
- › Aggressive lateral branching
- › Brown Stem Rot resistant
- › High yield potential with a large range of adaptability
- › **SCN Tolerance**



| Soybean Cyst Nematode Race | Phytophthora Gene | Phytophthora Field Tolerance | Brown Stem Rot | White Mold | Sudden Death Syndrome | Charcoal Root Rot | Dahlman Brand |
|----------------------------|-------------------|------------------------------|----------------|------------|-----------------------|-------------------|---------------------------|
| R3, MR14 | Rps 1c3a | 7.5 | 9.0 | 5.0 | 4.5 | NA | 7512XF NEW! |
| R3, MR14 | Rps 1c | 7.5 | 7.5 | 6.0 | 6.0 | NA | 7213XF |
| R3, MR14 | Rps 1c3a | 7.5 | 9.0 | 5.0 | 5.5 | NA | 7515XF NEW! |
| R3, MR14 | NG | 6.5 | 9.0 | 6.5 | 7.0 | 7.0 | 7218XF |
| R3, MR14 | NG | 6.5 | 9.0 | 6.5 | 7.0 | 7.0 | 7520XF NEW! |

KEY: 1 = Poor 2-3 = Fair 4-5 = Good 6-7 = Very Good 8-9 = Excellent

7520XF

2.0 **NEW!**

Medium Plant Height | Medium Plant Type

Strengths

- › Proven background, solid overall agronomics
- › Consistent multi-year top performance
- › Brown Stem Rot and Stem Canker resistant
- › Excellent standability and SDS tolerance
- › **SCN Tolerance**



CLEANER FIELDS LEAD TO HIGHER YIELDS.



The 2024 XtendFlex® soybean launch class has shown a 2.7 bu/A advantage vs. E3® soybeans.*



XtendFlex® trait technology provides farmers with flexibility to meet the needs of their operation through customizable weed management strategies.



Experience the added assurance of our Spray Early Weed Control Guarantee — all with the choice you've come to expect from the Roundup Ready® Xtend Technology.



Learn more by scanning the QR code here

*9,759 head-to-head comparisons in Bayer's 2023 breeding and market development germplasm trials v. key commercial E3® checks in major soybean growing regions +/- 0.2 RM, 64% win rate. No dicamba may be used in-crop with seed with Roundup Ready® Xtend Technology, unless and until approved or specifically permitted. No dicamba formulations have been registered for such in-crop use at the time this material was published. Please follow <https://www.roundupreadyxtend.com/pages/xtendmax-updates.aspx> for status updates.

Bayer is a member of Excellence Through Stewardship® (ETS). Bayer products are commercialized in accordance with ETS Product Launch Stewardship Guidance, and in compliance with Bayer's Policy for Commercialization of Biotechnology-Derived Plant Products in Commodity Crops. Commercialized products have been approved for import into key export markets with functioning regulatory systems. Any crop or material produced from this product can only be exported to, or used, processed or sold in countries where all necessary regulatory approvals have been granted. It is a violation of national and international law to move material containing biotech traits across boundaries into nations where import is not permitted. Growers should talk to their grain handler or product purchaser to confirm their buying position for this product. Excellence Through Stewardship® is a registered trademark of Excellence Through Stewardship. ALWAYS READ AND FOLLOW PESTICIDE LABEL DIRECTIONS. It is a violation of federal and state law to use any pesticide product other than in accordance with its labeling. NOT ALL formulations of dicamba, glyphosate or glufosinate are approved for in-crop use with products with XtendFlex® Technology. ONLY USE FORMULATIONS THAT ARE SPECIFICALLY LABELED FOR SUCH USES AND APPROVED FOR SUCH USE IN THE STATE OF APPLICATION. Contact the U.S. EPA and your state pesticide regulatory agency with any questions about the approval status of dicamba herbicide products for in-crop use with products with XtendFlex® Technology. Products with XtendFlex® Technology contain genes that confer tolerance to glyphosate, glufosinate and dicamba. Plants that are not tolerant to glyphosate, dicamba, and/or glufosinate may be damaged or killed if exposed to those herbicides. Contact your seed brand dealer or refer to the Bayer Technology Use Guide for recommended weed control programs. Roundup Ready 2 Xtend®, Roundup Ready 2 Yield®, Roundup Ready® and XtendFlex® are registered trademarks of Bayer Group. LibertyLink, lego® and LibertyLink® are trademarks of BASF Corporation. ©2024 Bayer Group. All rights reserved.



AFX 455-HVX Alfalfa

Performance

- › AFX 455-HVX is an alfalfa with the HarvXtra® trait and Roundup Ready® technology used to produce the highest quality alfalfa forage in the industry.
- › Strong disease resistance package and is very winterhardy.
- › High yield potential in multiple growing environments.

Management

- › Early season weed control with glyphosate herbicides help improve establishment success and first year yield potential compared to conventional varieties.
- › Choice of delaying cutting by 7-10 days or cutting for highest RFQ.

Agronomics

| | |
|-------------------------------|-----------|
| Yield rating: | 5 or Best |
| Fall dormancy class: | FD 4 |
| Winter hardiness class: | WS 2 |
| Multifoliate leaf expression: | Moderate |
| FastGrowth rating: | Average |
| Relative feed quality rating: | 5 or Best |

Pest Package

| | HR | R | MR | LR | S |
|----------------------------|----|---|----|----|---|
| Diseases | | | | | |
| Anthrachnose | ● | | | | |
| Aphanomyces-Race 1 | ● | | | | |
| Aphanomyces-Race 2 | | | ● | | |
| Bacterial wilt | ● | | | | |
| Fusarium wilt | ● | | | | |
| Phytophthora root rot | | ● | | | |
| Verticillium wilt | ● | | | | |
| Insects | | | | | |
| Pea aphid | | ● | | | |
| Spotted alfalfa aphid | | ● | | | |
| Nematode Resistance | | | | | |
| Stem nematode | | ● | | | |

5= Best; 3= Average; 1= Poor

AFX 463-RR Alfalfa

Performance

- › AFX 463-RR is an alfalfa with the Roundup Ready® technology for use in multiple growing regions including areas prone to stem nematode pressure.
- › 33 of 35 disease resistance package and is very winterhardy.
- › Very good standability and high yield potential in multiple growing environments.

Management

- › Early season weed control with glyphosate herbicides helps improve establishment success and first year yield potential compared to conventional varieties.

Agronomics

| | |
|-------------------------------|-----------|
| Yield rating: | 5 or Best |
| Fall dormancy class: | FD 4 |
| Winter hardiness class: | WS 2 |
| Multifoliate leaf expression: | Low |
| FastGrowth rating: | Average |
| Relative feed quality rating: | 3 |

Pest Package

| | HR | R | MR | LR | S |
|----------------------------|----|---|----|----|---|
| Diseases | | | | | |
| Anthrachnose | ● | | | | |
| Aphanomyces-Race 1 | | ● | | | |
| Aphanomyces-Race 2 | | ● | | | |
| Bacterial wilt | ● | | | | |
| Fusarium wilt | ● | | | | |
| Phytophthora root rot | ● | | | | |
| Verticillium wilt | ● | | | | |
| Insects | | | | | |
| Pea aphid | | ● | | | |
| Nematode Resistance | | | | | |
| Stem nematode | ● | | | | |

5= Best; 3= Average; 1= Poor



IN THE FOLLOWING STATES, PURCHASE AND USE OF HARVXTRA® ALFALFA WITH ROUNDUP READY® TECHNOLOGY IS SUBJECT TO A SEED AND FEED USE AGREEMENT, REQUIRING THAT PRODUCTS OF THIS TECHNOLOGY CAN ONLY BE USED ON FARM OR OTHERWISE BE USED IN THE UNITED STATES: ARIZONA, CALIFORNIA, COLORADO, IDAHO, MONTANA, NEVADA, NEW MEXICO, OREGON, UTAH, WASHINGTON AND WYOMING (THE "WESTERN STATES"). IN ADDITION, DUE TO THE UNIQUE CROPPING PRACTICES DO NOT PLANT HARVXTRA® ALFALFA WITH ROUNDUP READY® TECHNOLOGY IN IMPERIAL COUNTY, CALIFORNIA, PENDING IMPORT APPROVALS AND UNTIL FORAGE GENETICS INTERNATIONAL, LLC (FGI) GRANTS EXPRESS PERMISSION FOR SUCH PLANTING.

Forage Genetics International, LLC ("FGI") is a member of Excellence Through Stewardship® (ETS). FGI products are commercialized in accordance with ETS Product Launch Stewardship Guidance, and in compliance with FGI's Policy for Commercialization of Biotechnology-Derived Plant Products in Commodity Crops. HarvXtra® Alfalfa with Roundup Ready® Technology has pending import approvals. GROWERS IN THE WESTERN STATES MUST DIRECT ANY PRODUCT PRODUCED FROM HARVXTRA® ALFALFA WITH ROUNDUP READY® TECHNOLOGY SEED OR CROPS (INCLUDING HAY AND HAY PRODUCTS) ONLY TO UNITED STATES DOMESTIC USE.



Hi-Gest 360 Alfalfa

Performance

- › A high yield potential, variety with Hi-Gest® Alfalfa Technology with improved fiber digestibility, intake and extent of digestion versus other conventional alfalfas.
- › A product of traditional plant breeding with a variety patent pending.
- › A variety that has been meeting grower and livestock producers expectations since 2015 growing season.

Management

- › Adapted to today's best alfalfa management practices.
- › Adapted to aggressive high quality or more relaxed high tonnage management systems.
- › Rations using Hi-Gest can be easily balanced by nutritionists with the results of an accurate feed test.

Appearance at Harvest Maturity

- › Plants are medium-tall, with a higher stem count, axillary branching, and a dense canopy of leaves** up and down each stem.
- › A high leaf-to-stem ratio and more crude protein than other conventionally bred, high quality, dormant alfalfa varieties at harvest maturity.

Head to Head Comparison Yield in DM Tons per Acre

| Competitor | Competitor | Hi-Gest 360 | Harvest Years ¹ | % Yield Advantage |
|------------------|------------|-------------|----------------------------|-------------------|
| N-R-GEE | 6.15 | 7.26 | 6 | 18% |
| WL 336HQ RR | 2.20 | 2.45 | 1 | 12% |
| WL 355RR | 2.26 | 2.45 | 1 | 8% |
| AmeriStand 403T | 3.18 | 3.40 | 3 | 7% |
| L-449 | 6.38 | 6.73 | 15 | 6% |
| WL 319HQ | 6.71 | 7.02 | 46 | 5% |
| AmeriStand 445-N | 5.95 | 6.17 | 2 | 4% |
| Mountaineer 2.0 | 7.92 | 8.05 | 4 | 2% |
| WL 372HQ.RR | 6.11 | 6.17 | 2 | 1% |
| WL 363HQ | 7.42 | 7.42 | 6 | 0% |
| Legendairy XHD | 5.85 | 5.83 | 69 | 0% |
| DKA 44-16 | 7.00 | 6.91 | 1 | -1% |

¹ Harvest Years = the number of years in either Public and/or Private trials where the two varieties have been in the same trial and are on harvest schedule for the yield comparisons to be listed.

Any crop or material produced from this product can only be exported to, or used, processed or sold in countries where all necessary regulatory approvals have been granted. It is a violation of national and international law to move material containing biotech traits across boundaries into nations where import is not permitted. Growers should talk to their grain handler or product purchaser to confirm their buying position for this product. Growers should refer to <http://www.biotradestatus.com/> for any updated information on import country approvals. Excellence Through Stewardship® is a registered trademark of Excellence Through Stewardship.

ALWAYS READ AND FOLLOW PESTICIDE LABEL DIRECTIONS. Roundup Ready® crops contain genes that confer tolerance to glyphosate. Glyphosate herbicides will kill crops that are not tolerant to glyphosate.

Roundup Ready® is registered trademarks of Bayer Group, used under license by Forage Genetics International, LLC. HarvXtra® is a registered trademark of Forage Genetics International, LLC. HarvXtra® Alfalfa with Roundup Ready® Technology is enabled with Technology from The Samuel Roberts Noble Foundation, Inc.

Agronomics

| | |
|-------------------------------|-----------------------|
| Yield rating: | 5 or Best |
| Fall dormancy class: | FD 3 |
| Winter hardiness class: | WS 1.5 |
| Multifoliate leaf expression: | 73%/Moderate MF |
| FastGrowth rating: | 1.83/Average |
| Salinity tolerance: | Germination: Tolerant |

Pest Package

| | HR | R | MR | LR | S |
|----------------------------|----|---|----|----|---|
| Diseases | | | | | |
| Anthracnose | ● | | | | |
| Aphanomyces-Race 1 | ● | | | | |
| Aphanomyces-Race 2 | ● | | | | |
| Bacterial wilt | ● | | | | |
| Fusarium wilt | ● | | | | |
| Phytophthora root rot | ● | | | | |
| Verticillium wilt | ● | | | | |
| Insects | | | | | |
| Blue alfalfa aphid | | ● | | | |
| Cowpea aphid | | ● | | | |
| Pea aphid | | | ● | | |
| Spotted alfalfa aphid | ● | | | | |
| Nematode Resistance | | | | | |
| Northern root knot | | ● | | | |
| Stem nematode | | ● | | | |

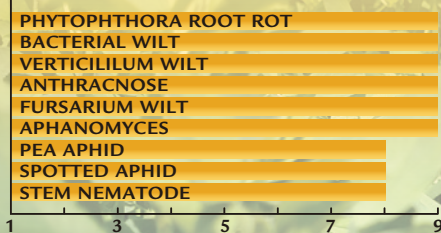
5= Best; 3= Average; 1= Poor

* The increased rate of fiber digestion, extent of digestion, and crude protein data was developed from replicated research and on-farm testing. During the 2015 growing season at West Salem, WI and Woodland, CA, the following commercial dormant, semi-dormant and non-dormant alfalfa varieties were compared head-to-head with Hi-Gest® alfalfa for rate of digestion, extent of digestion and percent crude protein: America's Alfalfa Brand AmeriStand 4271Q, Croplan Brands Legendairy XHD and Artesia Sunrise, Fertilzona Brand Fertilac, S&W Seed Brands SW6330, SW7410 and SW10 and W-L Brands WL 319HQ and WL 354HQ. Also during the 2015 growing season, 32 on-farm Hi-Gest hay and silage samples were submitted to Rock River Laboratory, Inc., for forage analysis. The results for rate of digestion, extent of digestion and percent crude protein were averaged and compared to the 60-day and four-year running averages for alfalfa in the Rock River database which included approximately 1,700 alfalfa hay and 3,800 silage 60-day test results and 23,000 hay and 62,000 silage tests results in the four-year average.

** Improved Hi-Gest® alfalfa leafiness, as documented by Alforex Seeds replicated trials at West Salem, WI and Woodland, CA, versus the following commercial alfalfa varieties: America's Alfalfa Brand AmeriStand 4271Q, Croplan Brands Legendairy XHD and Artesia Sunrise, Fertilzona Brand Fertilac, S&W Brands SW6330, SW7410 and SW10 and W-L Brands WL 319HQ and WL 354HQ.

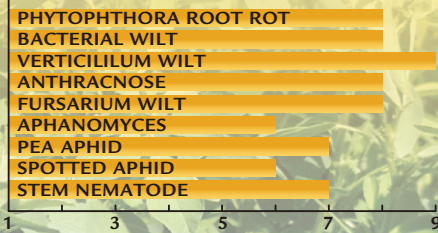
Perfect Plus Alfalfa

- › Winter hardiness – very hardy
- › Recovery – very fast
- › Wisconsin disease rating – 30 of 30
- › Leaf to stem ratio – very high



Colt's Alfalfa

- › Winter hardiness – hardy
- › Recovery – very fast
- › Wisconsin disease rating – 29 of 30
- › Leaf to stem ratio – high





Think Before You Bin Run

Verification Required The last patent on the original Roundup Ready® soybean trait expired a few years ago and U.S. farmers may legally plant saved seed from some varieties of soybean containing the Roundup Ready® soybean trait. However, it is important that you check with your seed supplier to determine if a specific Roundup Ready® soybean variety is covered by other intellectual property rights, and if so, the policy for saving seed of that variety.

Higher Seeding Rate A higher seeding rate may be required for bin-run Roundup Ready® soybeans compared to new branded seed.

Yield Loss Roundup Ready 2 Yield® soybean, Roundup Ready 2 Xtend® soybean, and XtendFlex® soybean varieties typically have a higher yield opportunity than Roundup Ready® soybean varieties.

Cleanout Loss Loss of seed and/or shrink occurs during the seed cleaning and handling processes for bin-run seed.

Seed Treatment Costs Treating your seed will add costs—both the cost of the treatment and the application of that treatment.

Lost Income Every bushel of saved seed you plant is a bushel you're not selling as commodity grain.

Increased Seed Management If you plan to save and bin-run Roundup Ready® soybeans for planting, you will have to manage your harvest operations and grain storage so that the seed isn't co-mingled with other seed that's covered by intellectual property rights.

High Value of New Branded Seed

Latest Technology

- // High-yielding soybean technologies
- // Better variety options
- // Leading seed treatment options

Customer Service

- // Dealer agronomic support before and after the sale
- // Replant policy support
- // Convenient packaging and delivery

Reliable Germination and Quality

- // Rigorously tested and meets U.S. Federal Seed Act requirements
- // Free of seed-borne diseases
- // Properly stored and conditioned

For a list of Bayer's trait patents go to cs.bayerpatents.bayer.com

For questions regarding seed intellectual property, or to anonymously report a saved seed tip, you can contact Bayer in the following ways:

1. Call 1-866-99-BAYER
2. Send a letter: Trait Stewardship, 622 Emerson Rd., Suite 150, Creve Coeur, MO 63141
3. Submit a contact request at cropscience.bayer.us/contact or scan the QR code



2025 Dahlman Corn Reference Chart



Conventional

| Relative Maturity | VT Double PRO® & Trecepta® RIB Complete® corn blend | Drought Gard® VT Double PRO® RIBComplete® | Smart Stax® RIB Complete® corn blend | Powercore® Enlist® | Roundup Ready® 2 | Conventional |
|-------------------|--|---|--------------------------------------|---|---|--------------|
| 82 | R41-22VT2PRIB | | | | | |
| 82 | R41-23VT2PRIB | | | | R41-154  | |
| 85 | R42-28VT2PRIB | | | | | |
| 85 | R43-29VT2PRIB | | | | R43-19 | D43-01 |
| 85 | | | | | | D43-042 |
| 86 | R43-24VT2PRIB | | | 5086PCE  | | |
| 90 | R45-25VT2PRIB | | | | | |
| 90 | R45-250VT2PRIB  | | | | R45-12 | |
| 92 | R46-27VT2PRIB | | | 5092PCE  | R46-14 | D46-04 |
| 94 | | R47-245 DG/VT2PRIB | | | | |
| 94 | R47-24VT2PRIB | | R46-313SSRIB | | R47-10 | |
| 94 | R47-258VT2PRIB  | | | | | |
| 95 | R48-28VT2PRIB | | | | | D48-04 |
| 95 | R48-239VT2PRIB | | | | | |
| 96 | R48-21VT2PRIB | | | 3096PCE | | D48-08 |
| 98 | R49-29VT2PRIB | | | | | D49-039 |
| 98 | R49-23VT2PRIB | | R49-340SSRIB | | | |
| 100 | R50-252VT2PRIB  | | R50-355SSRIB | | | |
| 102 | R52-254TRE  | | | 5102PCE  | | |
| 103 | R52-24VT2PRIB | | | | R52-14 | D52-04 |
| 104 | R52-26VT2PRIB | | | | | |
| 106 | | | R53-359SSRIB | | | |
| 106 | | | R53-350SSRIB | | | |

Matching colors indicate corn hybrids from the same base genetic family



Before opening a bag of seed, be sure to read, understand and accept the stewardship requirements, including applicable refuge requirements for insect resistance management, for the biotechnology traits expressed in the seed as set forth in the Technology/Stewardship Agreement that you sign. By opening and using a bag of seed, you are reaffirming your obligation and agreement to comply with the most recent stewardship requirements.



No dicamba may be used in-crop with seed with Roundup Ready® Xtend Technology, unless and until approved or specifically permitted, and no dicamba formulations are currently registered for such use in the 2024 season. Please follow <https://www.roundupreadyxtend.com/pages/xtendimax-updates.aspx> for status updates.

Bayer is a member of Excellence Through Stewardship® (ETS). Bayer products are commercialized in accordance with ETS Product Launch Stewardship Guidance, and in compliance with Bayer's Policy for Commercialization of Biotechnology-Derived Plant Products in Commodity Crops. Commercialized products have been approved for import into key export markets with functioning regulatory systems. Any crop or material produced from this product can only be exported to, or used, processed or sold in countries where all necessary regulatory approvals have been granted. It is a violation of national and international law to move material containing biotech traits across boundaries into nations where import is not permitted. Growers should talk to their grain handler or product purchaser to confirm their buying position for this product. Excellence Through Stewardship® is a registered trademark of Excellence Through Stewardship.

Seed containing a patented trait can only be used to plant a single commercial crop. It is unlawful to save and replant Roundup Ready 2 Yield® soybeans, Roundup Ready 2 Xtend® soybeans, and XtendFlex® soybeans. Additional information and limitations on the use of these products are provided in the Technology Stewardship Agreement and the Bayer Technology Use Guide: tug.bayer.com. U.S. patents for Bayer technologies can be found at the following webpage: cs.bayerpatents.bayer.com

ALWAYS READ AND FOLLOW PESTICIDE LABEL DIRECTIONS. It is a violation of federal and state law to use any pesticide product other than in accordance with its labeling. NOT ALL formulations of dicamba or glyphosate are approved for in-crop use with Roundup Ready 2 Xtend® soybeans. NOT ALL formulations of dicamba, glyphosate or glufosinate are approved for in-crop use with products with XtendFlex® Technology. ONLY USE FORMULATIONS THAT ARE SPECIFICALLY LABELED FOR SUCH USES AND APPROVED FOR SUCH USE IN THE STATE OF APPLICATION. Contact the U.S. EPA and your state pesticide regulatory agency with any questions about the approval status of dicamba herbicide products for in-crop use with Roundup Ready 2 Xtend® soybeans or products with XtendFlex® Technology.

B.t. products may not yet be registered in all states. Check with your seed brand representative for the registration status in your state.

Refuge seed may not always contain the DroughtGard® trait.

IMPORTANT IRM INFORMATION: Certain products are sold as RIB Complete® corn blend products, and do not require the planting of a structured refuge except in the Cotton-Growing Area where corn earworm is a significant pest. Products sold without refuge in the bag (non-RIB Complete) require the planting of a structured refuge. See the IRM/Grower Guide for additional information. Always read and follow IRM requirements.

Roundup Ready® 2 Technology contains genes that confer tolerance to glyphosate. Roundup Ready 2 Xtend® soybeans contain genes that confer tolerance to glyphosate and dicamba. Products with XtendFlex® Technology contains genes that confer tolerance to glyphosate, glufosinate and dicamba. Glyphosate will kill crops that are not tolerant to glyphosate. Dicamba will kill crops that are not tolerant to dicamba. Glufosinate will kill crops that are not tolerant to glufosinate. Contact your seed brand dealer or refer to the Bayer Technology Use Guide for recommended weed control programs.

Insect control technology provided by Vip3A is utilized under license from Syngenta Crop Protection AG. Herculex® is a registered trademark of Dow AgroSciences LLC. Agrisure Viptera® is a registered trademark of a Syngenta group company. LibertyLink® and the Water Droplet Design® is a trademark of BASF Corporation. Respect the Refuge and Corn Design® and Respect the Refuge® are registered trademarks of National Corn Growers Association. Acceleron®, DroughtGard®, RIB Complete®, Roundup Ready 2 Technology and Design™, Roundup Ready 2 Xtend®, Roundup Ready 2 Yield®, Roundup Ready®, SmartStax®, Trecepta®, VT Double PRO® and XtendFlex® are trademarks of Bayer Group.

Seeds containing the PowerCore® Enlist®, PowerCore® Enlist® Refuge Advanced®, and Enlist® Corn - REFUGE traits are protected under one or more U.S. patents which can be found at: www.traitstewardship.com. The purchase of this traited seed includes a limited license to produce a single crop in the United States. The use of seed from such a crop and/or the progeny thereof for propagation or seed multiplication or for production or development of a hybrid or different variety of seed is strictly prohibited. You acknowledge and agree to be bound by the terms and conditions of the following documents in effect

at the time of planting of this seed: (i) the Corteva Agriscience Technology Use Agreement and (ii) the Product Use Guides for all technologies in this seed, including the Herbicide Resistance Management (HRM), and Use requirements.

To plant PowerCore Enlist, PowerCore Enlist Refuge Advanced, and Enlist Corn - REFUGE seed, you must have a limited license from Corteva Agriscience (or other appropriate affiliates). In consideration of the foregoing, Corteva Agriscience grants to the Grower a limited license to use its technology to produce only a single commercial crop in the United States under the terms and conditions set forth in the Technology Use Agreement in effect at the time of planting of this seed.

IRM - Properly managing trait technology is key to preserving it as a long term crop protection tool. **Growers who fail to comply with IRM requirements risk losing access to this product.** To help preserve the effectiveness of B.t. corn technologies, growers planting B.t. corn technologies are required to follow an IRM Plan. Consult the Corn Product Use Guide for appropriate refuge configuration options. Before opening a bag of seed, be sure to read, understand and accept the stewardship requirements, including applicable refuge requirements for insect resistance management, for the biotechnology traits expressed in the seed as set forth in the Technology Use Agreement and Product Use Guide. By opening and using a bag of seed, you are reaffirming your obligation to comply with the most recent stewardship requirements. For complete details on IRM requirements for hybrids with Bt technology, including refuge examples and important information on the use of insecticides on refuge and Bt corn acres, please consult appropriate Product Use Guide. Go to www.corteva.us/Resources/trait-stewardship.html to download the latest Corteva Agriscience Corn Product Use Guide.

Enlist E3® soybean seeds containing the Enlist® trait can only be used to plant a single commercial crop. It is unlawful to save and replant Enlist E3® soybeans. Additional information and limitations on the use of these products are provided in the Corteva Agriscience Technology Use Agreement and Enlist® Soybean Product Use Guide. U.S. patents for Corteva Agriscience technologies can be found at the following webpage: www.corteva.us/Resources/trait-stewardship.html.

Corteva Agriscience is a member of Excellence Through Stewardship® (ETS). Corteva Agriscience products are commercialized in accordance with ETS Product Launch Stewardship Guidance and in compliance with the Corteva Agriscience policies regarding stewardship of those products. In line with these guidelines, Corteva Agriscience's product launch process for responsible launches of new products includes a long-standing process to evaluate export market information, value chain consultations, and regulatory functionality. Growers and end-users must take all steps within their control to follow appropriate stewardship requirements and confirm their buyer's acceptance of the grain or other material being purchased. For more detailed information on the status of a trait or stack, please visit www.biotradestatus.com.

Following burndown, Enlist Duo® and Enlist One® herbicides with Colex-D® technology are the only herbicides containing 2,4-D that are authorized for preemergence and postemergence use with Enlist® corn and soybeans. Consult Enlist® herbicide labels for weed species controlled. Enlist Duo and Enlist One herbicides are not registered for use or sale in all states and counties; are not registered in AK, CA, CT, HI, ID, MA, ME, MT, NH, NV, OR, RI, UT, VT, WA and WY; and have additional subcounty restrictions in AL, GA, TN and TX, while existing county restrictions still remain in FL. All users must check "Bulletins Live! Two" no earlier than six months before using Enlist One or Enlist Duo. To obtain "Bulletins," consult epa.gov/esp/, call 1-844-447-3813, or email ESP@epa.gov. You must use the "Bulletin" valid for the month and state and county in which Enlist One or Enlist Duo are being applied. Contact your state pesticide regulatory agency if you have questions about the registration status of Enlist® herbicides in your area. ALWAYS READ AND FOLLOW PESTICIDE LABEL DIRECTIONS. IT IS A VIOLATION OF FEDERAL AND STATE LAW TO USE ANY PESTICIDE PRODUCT OTHER THAN IN ACCORDANCE WITH ITS LABELING. ONLY USE FORMULATIONS THAT ARE SPECIFICALLY LABELED FOR SUCH USE IN THE STATE OF APPLICATION. USE OF PESTICIDE PRODUCTS, INCLUDING, WITHOUT LIMITATION, 2,4-D-CONTAINING PRODUCTS NOT AUTHORIZED FOR USE WITH ENLIST CORN AND SOYBEANS, MAY RESULT IN OFF-TARGET DAMAGE TO SENSITIVE CROPS/AREAS AND/OR SUSCEPTIBLE PLANTS, IN ADDITION TO CIVIL AND/OR CRIMINAL PENALTIES. Additional product-specific stewardship requirements for Enlist crops, including the Enlist Product Use Guide, can be found at www.traitstewardship.com.

POWERCORE® is a registered trademark of Bayer Group. POWERCORE® multi-event technology developed by Corteva Agriscience and Bayer Group. Liberty®, LibertyLink® and the Water Droplet Design are registered trademarks of BASF. ®Roundup and Roundup Ready are registered trademarks of Bayer Group. Always follow IRM, grain marketing and all other stewardship practices and pesticide label directions. B.t. products may not yet be registered in all states. Check with your seed representative for the registration status in your state. The transgenic soybean event in Enlist E3® soybeans is jointly developed and owned by Corteva Agriscience and M.S. Technologies, L.L.C.

Excellence Through Stewardship® is a registered trademark of Excellence Through Stewardship.

™ ® Trademarks of Corteva Agriscience and its affiliated companies.





73504 200th Street, Dassel, MN 55325 • (320) 275-2527 • Fax (320) 275-2290
1-800-BUY SEED (1-800-289-7333) • www.dahlgmanseed.com





Premium Seed – Leading Edge Technology

Roscoe, SD & Aberdeen, SD



KEVIN SCHERR - Owner
kevin@integrityagllc.com
605-281-0640

STEVE SCHERR - Owner
8stevescherr@gmail.com
605-281-1453